



common thread collection

## common thread collection

The Common Thread Collection by Bernhardt Textiles creates a thoughtfully designed experience by weaving together vibrant colors, geometric patterns, and distinct textures. The collection features four fabrics, all united by a diagonal design and each named after its representative shape. There are two performance fabrics and two sustainable fabrics included in the offering, with a wide range of colors, from pitch blue and lichen green to lively shades of campfire orange and firecracker red.





## knot

Knot, a simple and elegant solid, showcases a modern aesthetic with an extensive palette of fashion-inspired colors such as dark brown and muted purple. Sustainably made with recycled polyester, this comfortable fabric has a luxurious hand and subtle sheen.









## prism

Prism is a three-dimensional textured Jacquard woven with two layers of fabric and a filler pick. A matte slub yarn gives this 100% polyester textile the appearance of a natural fiber. A high-performance solid that is bleach-cleanable, Prism is available in 12 trendy colors, including many blue and green tones.











common thread collection



## rhombus

Rhombus is comprised of hand-drawn lines crossed to form diagonal patterns. A high-performance fabric at a budget-friendly price, Rhombus features 13 colors, ranging from light to dark neutrals, tinted neutrals, and saturated blues and greens.









## dotted

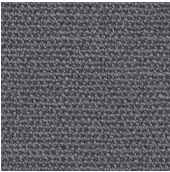
A two-colored small dot mélange with visual texture characterizes Dotted, a fabric made from 100% New Zealand wool and rapidly renewable materials. This classic wool is naturally stain-resistant and available in nine colors, ranging from rich jewel tones to a variety of cool and warm neutrals.





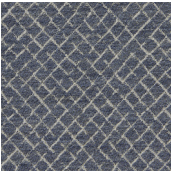






### knot 3569

Application	Upholstery, Vertical wall
Content	83% Recycled Polyester, 17% Polyester
Width	55”
Repeat	None
Weight	20.47 ounces
Finish	None
Abrasion	100,000 Double Rubs (Wyzenbeek)
Flammability	California TB 117-2013, UFAC Class 1, NFPA 260 Class 1, ASTM E84 UnAdhered - Class 2
Sustainability	SCS Indoor Advantage™ Gold, Recycled Content, LBC Red List Free, OEKO-Tex
Cleaning Code	SW
Price	\$47 Net Per Yard   Grade 2
Origin	India
Notes	Sustainable



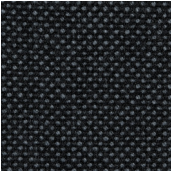
### rhombus 3571

Application	Upholstery
Content	44% Acrylic, 35% Nylon, 21% PC Polyester
Width	54”
Repeat	9” V x 7 3/4” H
Weight	14.45 ounces
Finish	DEFEND® Free
Backing	Acrylic
Abrasion	100,000 Double Rubs Wyzenbeek
Flammability	California TB 117-2013, UFAC Class 1, NFPA 260 Class 1, ASTM E84 UnAdhered - Class 2
Sustainability	SCS Indoor Advantage™ Gold, LBC Red List Free
Cleaning Code	WS - Dry Clean
Price	\$45 Net Per Yard   Grade 1
Origin	United States of America
Notes	Performance, Bleach Cleanable - 4:1 Ratio Stain Resistant



### prism 3570

Application	Upholstery, Vertical wall
Content	100% Polyester
Width	55”
Repeat	5/8” V x 5/8” H
Weight	29.02 ounces
Finish	None
Abrasion	100,000 Double Rubs (Wyzenbeek)
Flammability	California TB 117-2013, UFAC Class 1, NFPA 260 Class 1, ASTM E84 UnAdhered - Class 2
Sustainability	SCS Indoor Advantage™ Gold, LBC Red List Free
Cleaning Code	W
Price	\$80 Net Per Yard   Grade 7
Origin	Italy
Notes	Bleach Cleanable - 10:1 Ratio



### dotted 3572

Application	Upholstery, Vertical wall
Content	100% New Zealand Wool
Width	55”
Repeat	None
Weight	20.32 ounces
Finish	None
Abrasion	49,000 Cycles (Martindale)
Flammability	California TB 117-2013, NFPA 260 Class 1, UFAC Class 1, ASTM E84 UnAdhered - Class 2
Sustainability	SCS Indoor Advantage™ Gold, Rapidly Renewable, LBC Red List Free
Cleaning Code	S - Dry Clean
Price	\$72 Net Per Yard   Grade 6
Origin	Denmark
Notes	Sustainable



